

# Practicing Medicine in the Digital Age

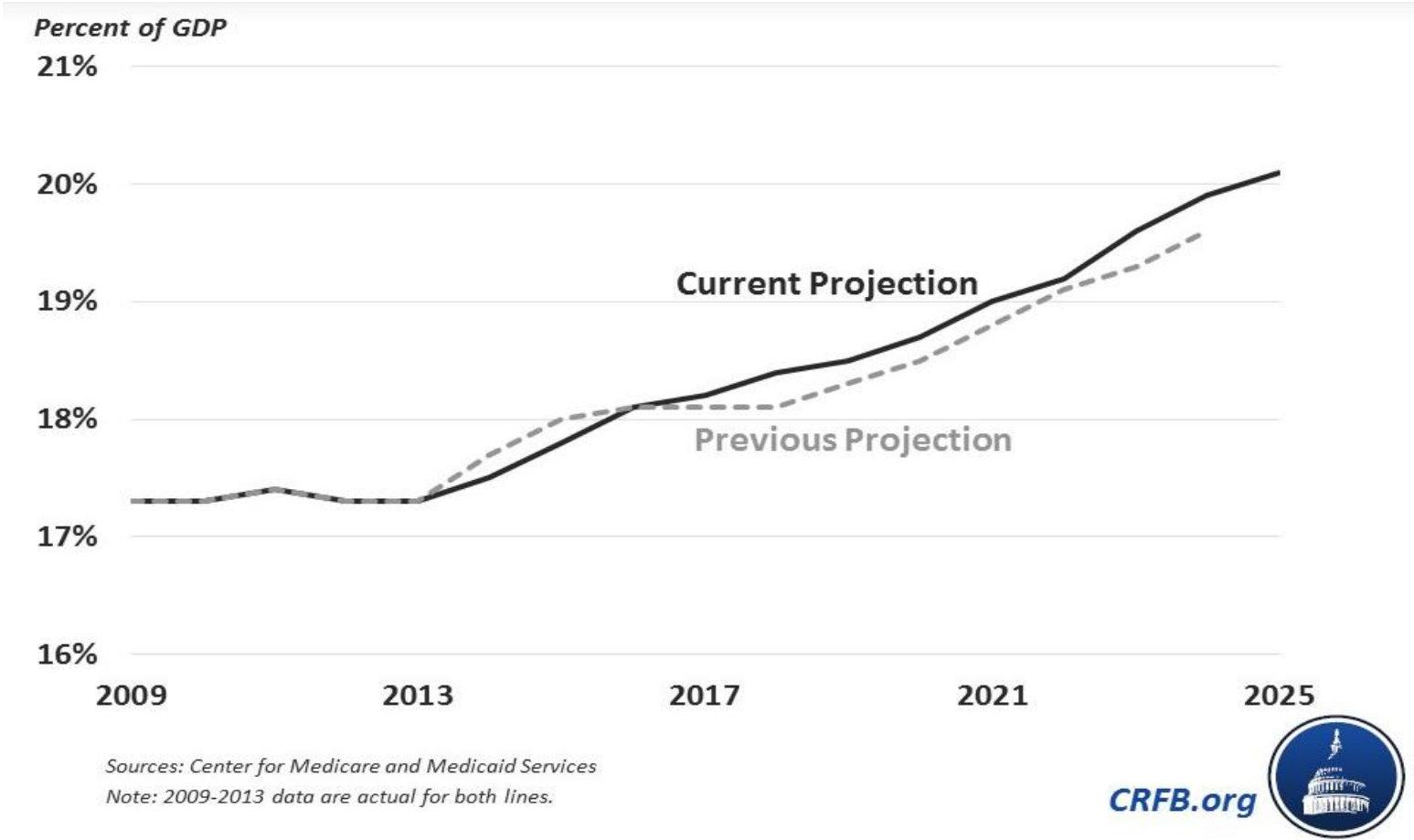
Lehigh Valley Business Health Care Symposium

August 2, 2018

**Joseph Habig II, MD**

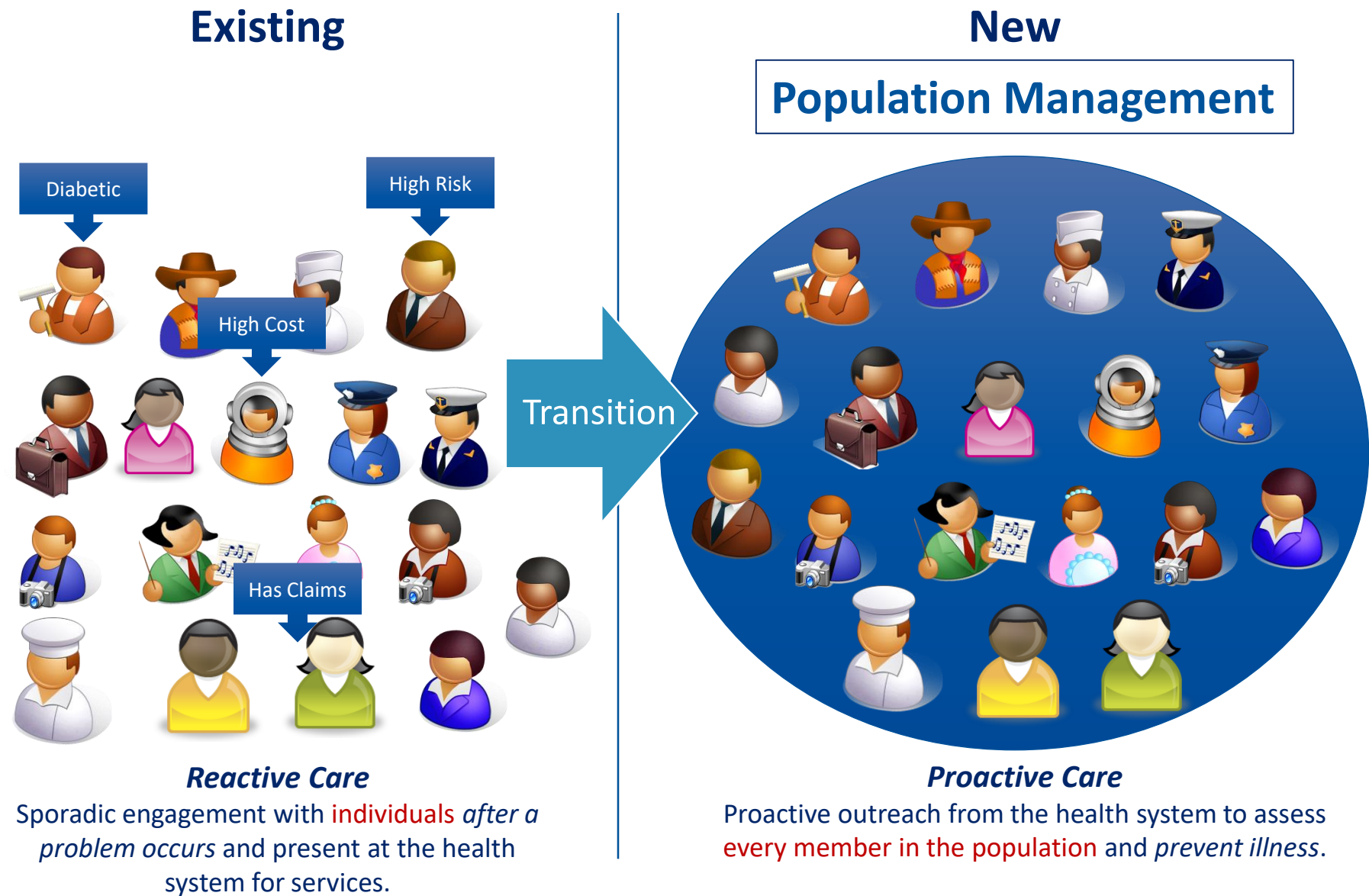
*Medical Director, LVPHO/Valley Preferred*

# Rising Costs of Health Care



# Triple Aim





# Value Based Reimbursement

- Shift occurring from Fee For Service > VBR
- Increased focus on Quality/Cost
- Measuring and reimbursing physicians: based on Quality and Cost containment
- Quality metrics
- Utilization costs

# Electronic Medical Records (EMR's)

- The Medical Profession has finally entered the digital age.
- “THE GOOD, THE BAD, AND THE UGLY”

# “The Bad, and the Ugly” (Challenges)

- Initially many systems > Expensive > Now fewer
- Systems not always intuitive for patient care.
- Steep learning curve for many physicians.

# “The Good” (Advantages / Goals)

- Comprehensive and timely data more available.
- Improved interoperability between systems.
- Better sharing of data.
- Reduced redundancy of testing, leading to improved cost containment.
- Portability of records.
- Insurers, CMS, more involved in using data; more collaborative.

# Sources of Data?

- EMRs, both yours and other systems
- Insurers including CMS
- Hospitals, Skilled Nursing facilities
- Pharmacies
- Laboratory and Radiology facilities
- Patients themselves (Patient Portals)
- LVPHO Provider Portal

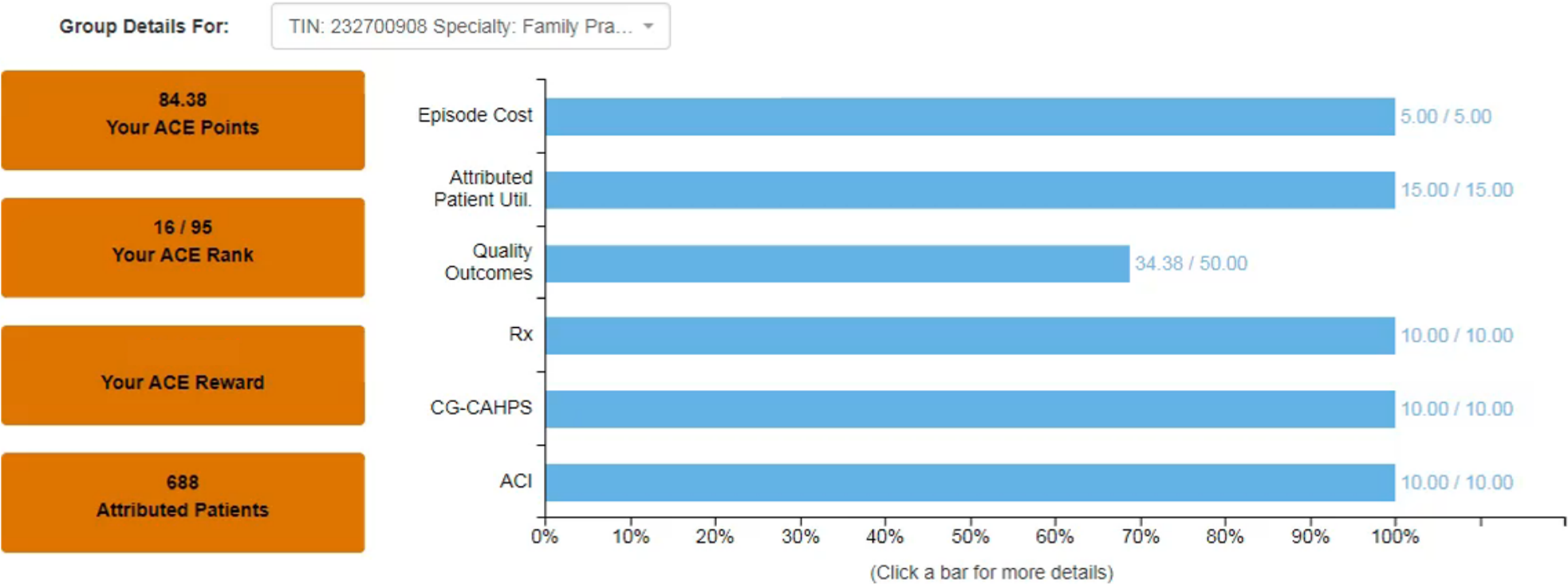
# LVPHO Secure Provider Portal

- A software system developed by the LVPHO and Populytics to assist physicians with patient management.
- Organizes data on patients into a usable, manageable form.
- Provides patient registries.
- Risk scoring and predictive analytics on patients.

# Lehigh Valley Physician Hospital Organization's (LVPHO) Physician Incentive Infrastructure

- A physician/provider compensation model to provide incentives to meet the Triple Aim (Better Care, Better Cost, Better Health)
- Assists with prioritization of quality metric goals among a multitude of payers

# Physician Performance Dashboard



# Optimistic Outcome

Physicians are learning and adjusting to these transitions in the providing of care to patients

The key is a Team Based Approach:

- Physicians
- PA's and NP's
- Pharmacists
- Community Care Teams
- Behavioral Health
- Social Workers
- Nurses and Medical Staffs
- Insurers



# Questions?

Contact Information:

**Joseph Habig, MD**

Medical Director, LVPHO/Valley Preferred

[Joseph.Habig@lvhn.org](mailto:Joseph.Habig@lvhn.org)